

# Precious

Fabric collection by Teresa Kogut

Just Precious quilt by Nancy Mahoney

Quilt size: 51½" x 57½"



**FREE PATTERN**  
Ask for our fabrics  
in your local  
independent  
quilt shop!



[pbtex.com](http://pbtex.com)

# Just Precious

Quilt by Nancy Mahoney using the *Precious* flannel fabric collection by Teresa Kogut for P&B Textiles

Quilt size: 51½" x 57½"

## Yardage

### PREC 424 E

1 panel (approximately 1 yard)

### PREC 429 B

1⅛ yard of blue small dots for borders & binding

### PREC 425 Y

¾ yard of yellow toys for border

### PREC 427 Y

⅓ yard of yellow large dots for border

### PREC 426 G

⅓ yard of green rocking horses for border blocks

### PREC 427 G

⅓ yard of green large dot for border blocks

### PREC 428 G

⅓ yard of green check for border blocks

### PREC 429 G

⅓ yard of green small dots for border blocks

### PREC 429 Y

¼ yard of yellow small dots for border blocks

3½ yards of any *Precious* flannel for backing



## Cutting

*Prewash all fabrics before cutting. Cut all strips across the width of fabric (wof).*

Yellow large dots, cut:

- (2) 2" x 32"
- (2) 1¾" x 28½"

Blue small dots, cut:

- (6) 2½" x wof binding strips
- (6) 2" x wof border strips
- (2) 1½" x 34½" border strips
- (2) 1½" x 30½" border strips

Yellow small dots, cut:

- (2) 2½" x wof strips, crosscut into (26) 2½" squares

Green rocking horses, cut:

- (2) 4½" x wof strips, crosscut into (26) 2½" x 4½" rectangles

Green large dots, cut:

- (2) 4½" x wof strips, crosscut into (26) 2½" x 4½" rectangles

Green check, cut:

- (2) 4½" x wof strips, crosscut into (26) 2½" x 4½" rectangles

Green small dots, cut:

- (2) 4½" x wof strips, crosscut into (26) 2½" x 4½" rectangles

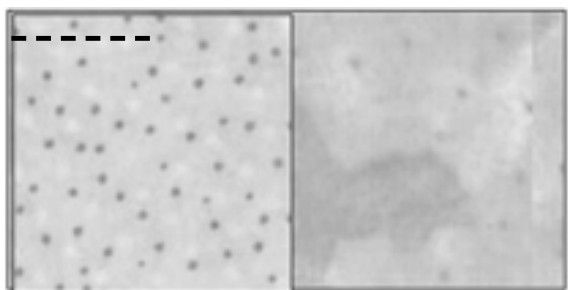
Yellow toys, cut:

- (6) 3½" x wof border strips



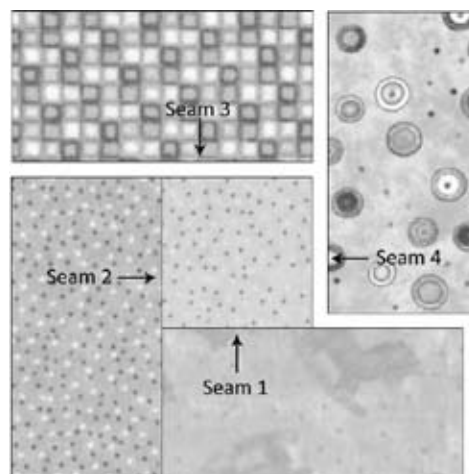
# Quilt Assembly

1. Trim the Precious flannel panel to  $25\frac{1}{2}$ " x 32", cutting an equal amount from all sides so that the panel is centered in the middle of the rectangle.
2. Sew a 2"-wide yellow large dots strip to each side of the panel; press. Sew a  $1\frac{3}{4}$ "-wide yellow large dots strip to the top and bottom of the panel; press.
3. Sew a  $34\frac{1}{2}$ "-long blue small dots border strip to each side of the center unit; press. Sew a  $30\frac{1}{2}$ "-long blue small dots strip to the top and bottom of the center unit; press. The center unit should measure  $30\frac{1}{2}$ " x  $36\frac{1}{2}$ ".
4. You'll make the border blocks using a partial seam technique. With right sides together, sew a green rocking horses rectangle to the bottom of each yellow small dot square, stitching only halfway across the edge of the yellow square as shown; press. Make 26.



5. Sew a green small dot rectangle to the left edge of each unit from step 4; press. Sew a green check rectangle to the top edge of each unit; press. Sew a green large dots rectangle to the right side of each unit; press.

Complete the partial seam stitched in step 4; press. Make 26 border blocks each measuring  $6\frac{1}{2}$ " square.



6. Referring to the photo and rotating the blocks as needed, sew together 6 blocks from step 5 to make a row; press. Make 2 rows and sew them to opposite sides of the center unit from step 3; press. Sew together 7 blocks from step 5 to make a row; press. Make 2 rows and sew them to the top and bottom of the center unit; press.
7. Sew together the  $3\frac{1}{2}$ "-wide yellow toys strips end to end. From the long strip, cut 4 strips  $48\frac{1}{2}$ " long. Sew a strip to each side of the quilt top; press. Then sew a strip to the top and bottom of the quilt top; press.
8. Sew together the 2"-wide blue small dots strips end to end. From the long strip, cut 2 strips  $54\frac{1}{2}$ " long and 2 strips  $51\frac{1}{2}$ " long. Sew the long strips to the sides of the quilt top; press. Sew the short strips to the top and bottom of the quilt top; press.
9. Layer the quilt top with batting and backing; baste. Quilt as desired. Using the  $2\frac{1}{2}$ "-wide blue small dots strips, bind the edges to finish. Add a label to the back of your quilt and enjoy!